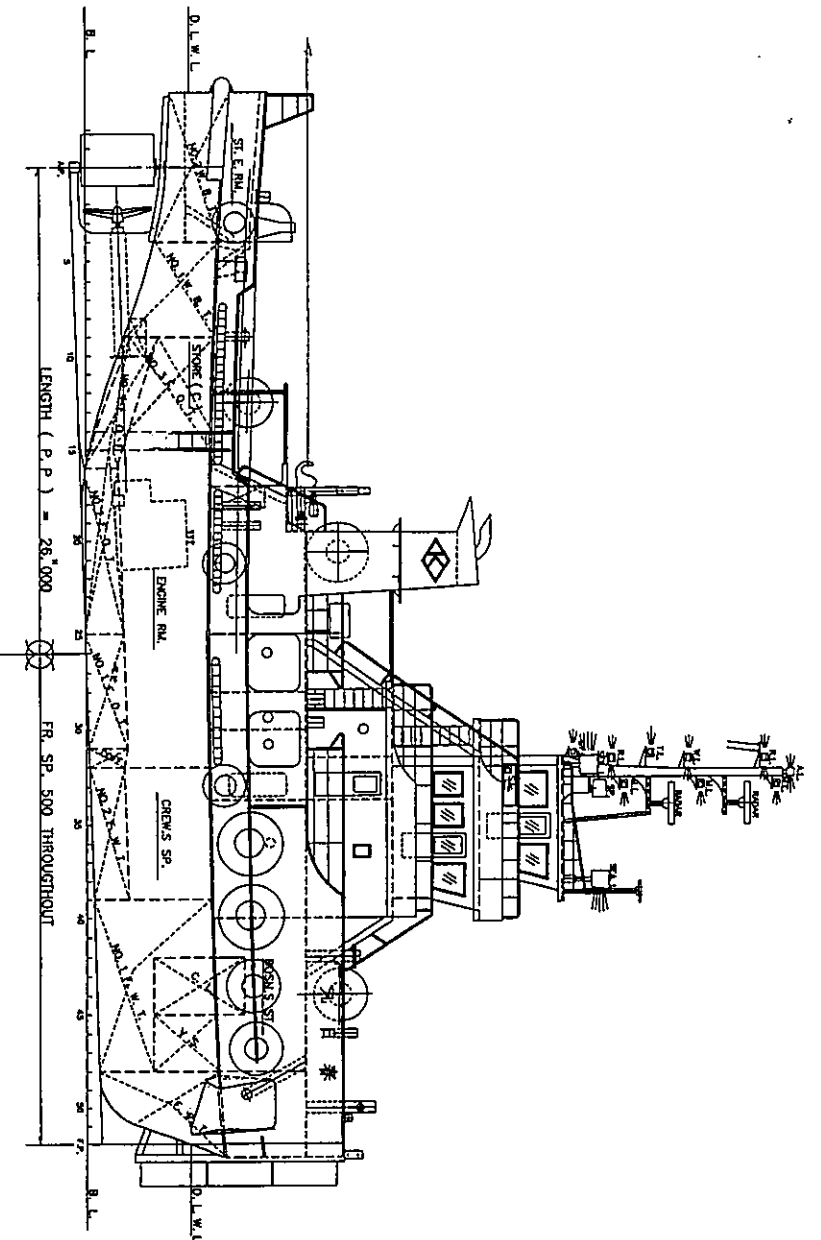


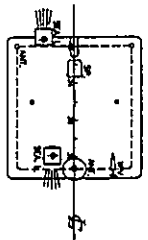
PRINCIPAL DIMENTIONS

LENGTH O. A.	28 ^m 38
LENGTH P. P.	26 ^m 00
BREADTH MLD.	8 ^m 00
DEPTH MLD.	3 ^m 21
DRAFT DESIGN	2 ^m 70
GROSS TONAGE	149 ^t
MAIN ENGINE	1000 ^{PS} X 2
SPEED	11.6 ^{kt}
PASSENGER	平水 6H未満 4P.
COMPLEMENT	6P.
NABL. AREA	COASTING SFR.

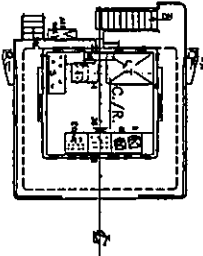


R. O. DECK

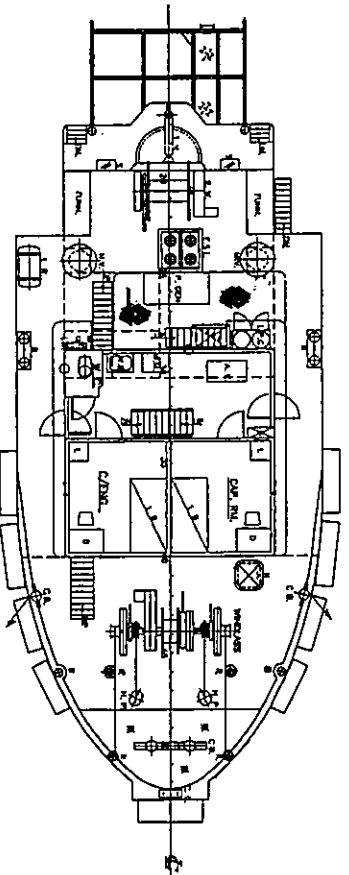
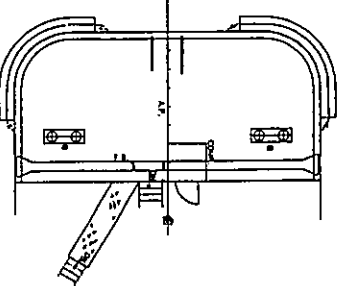
F'CLE DECK & ENG. CAS. TOP



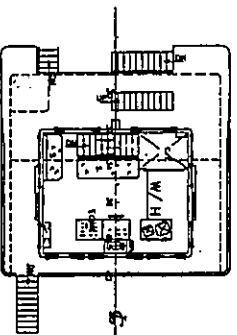
CONT. RM. TOP



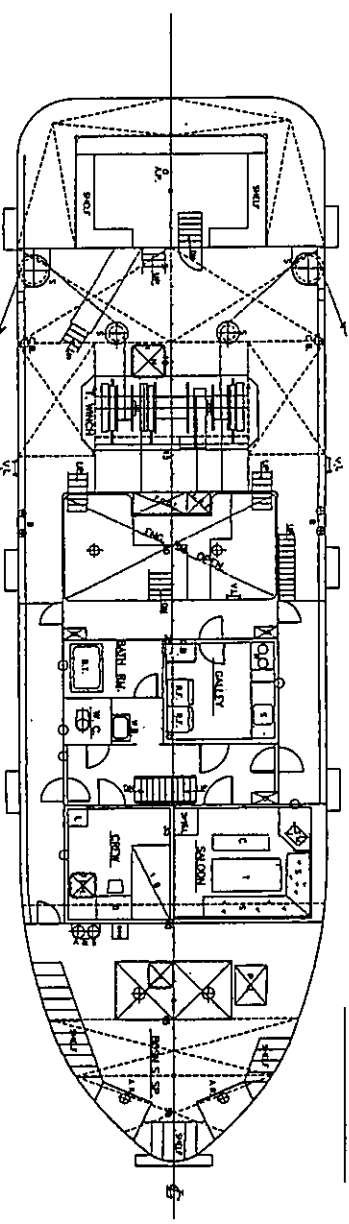
CONT. ROOM



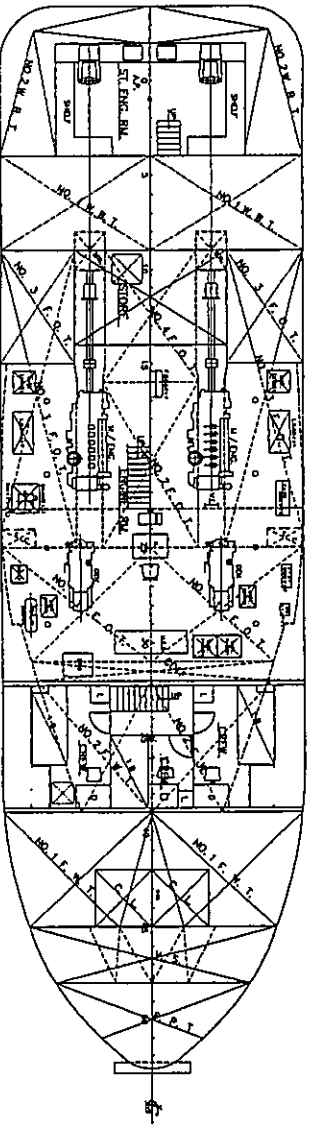
UPPER DECK



NAV. BR. DECK



HOLD



一般配置図

尺度 1/100

工事番号

図面番号

年月日 H. 14. 7.

社長 部長 設計 製図

宗田 進船株式会社

株式会社神陽商會 監
150G/T型押船兼曳船
春日 丸

明石市港町十六の六
宗田進船株式会社

EQUIPMENT NUMBER

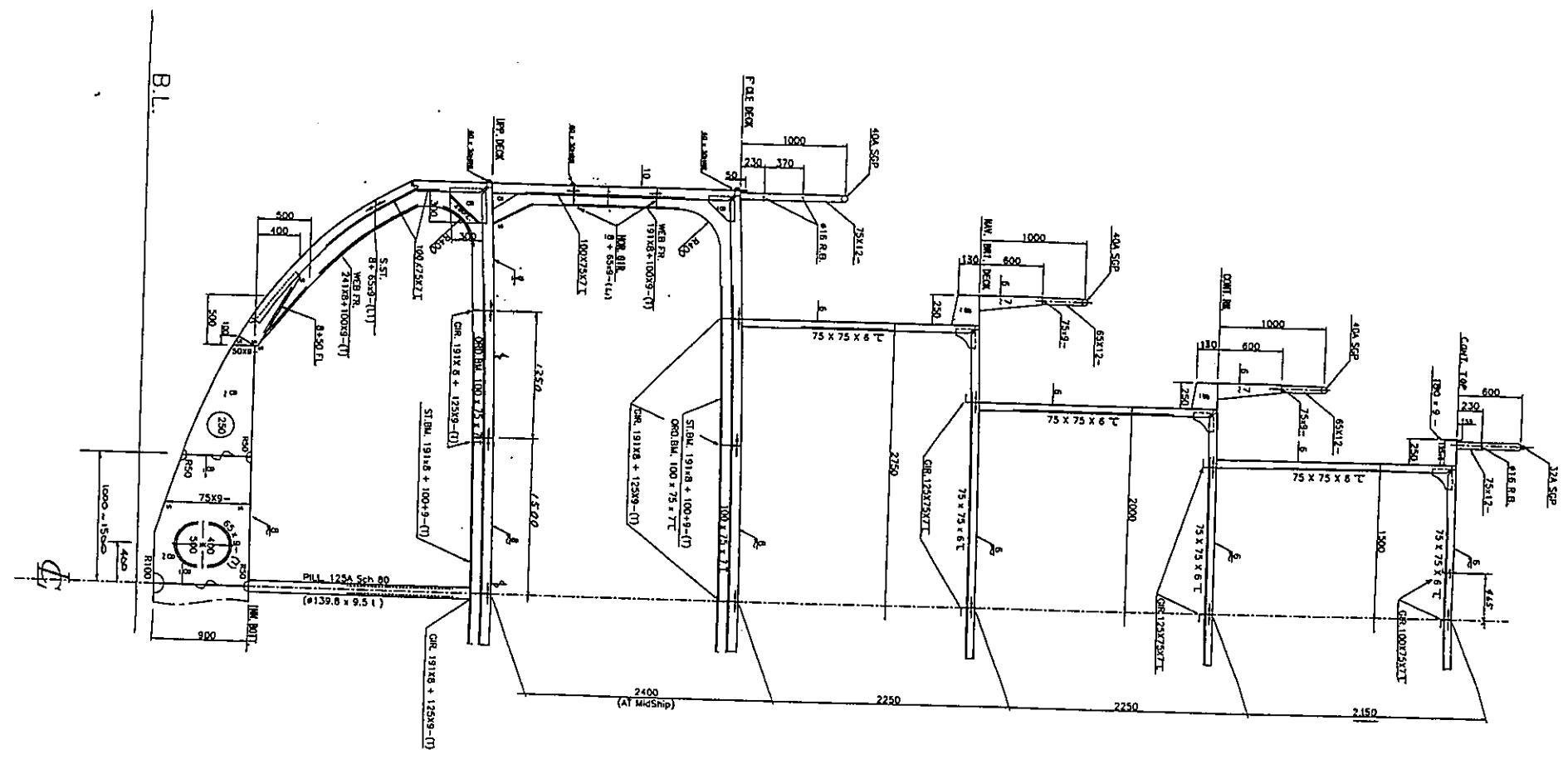
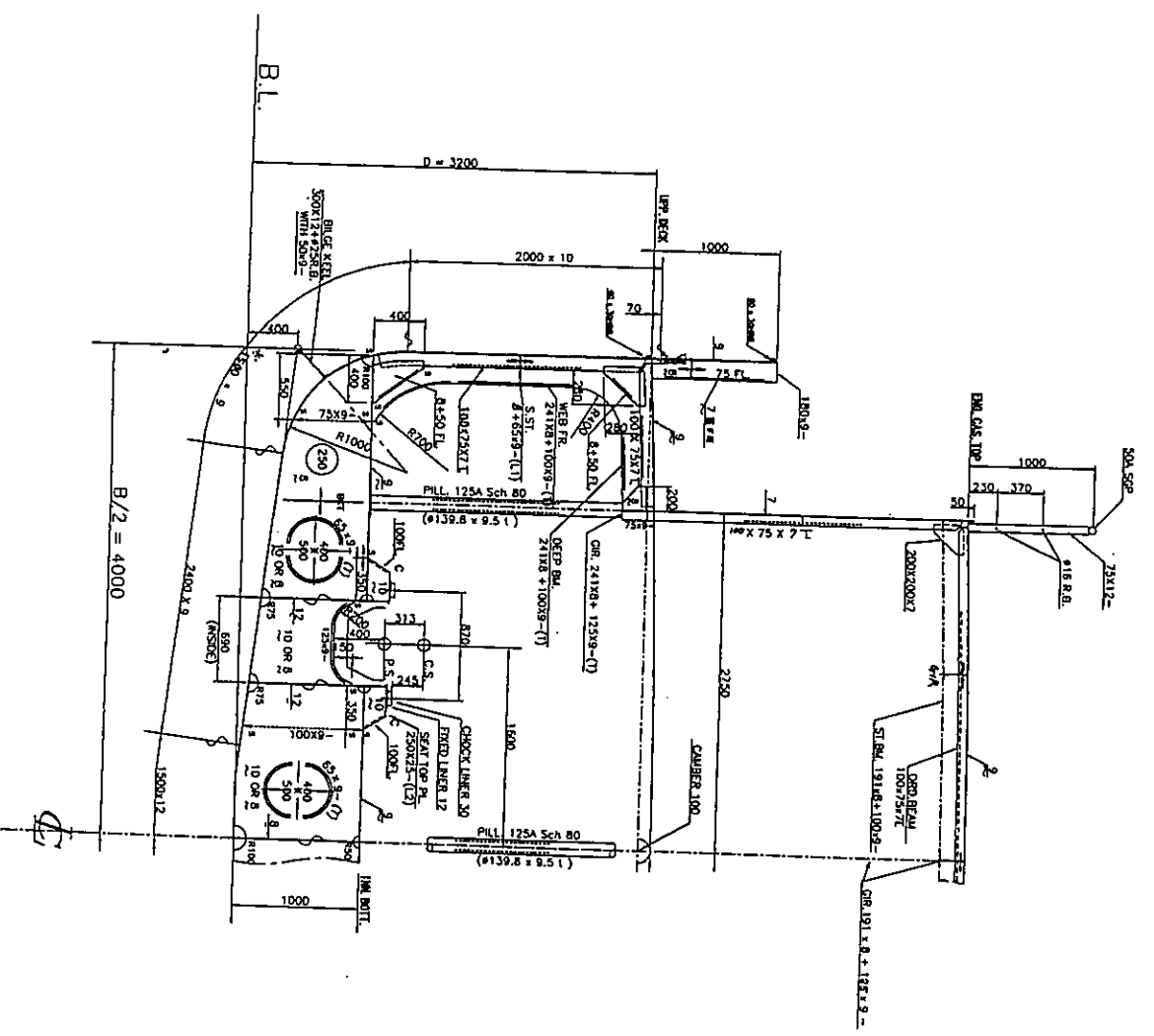
LS X (B + D)	27.02 (8-0+3.21)	302.89
RISED QUARTER DK.	2.88 x 0.8	2.40
F/OLE DECK	0.75 x 14.64 x 2.5	27.45
ENG. CASING	1/2 x 2.00 x 2.5	2.5
TOW. DECK	1/2 x 1.0 x 4.0	2.00
DECK HOUSE	1/2 x 5.5 x 2.25	6.19
DECK HOUSE	1/2 x 3.5 x 2.25	3.94
TOTAL		347

EQUIPMENTS

BOWER ANCHOR	(ストックレス)	660 K	X 2
CHAIN CABLE	(電接三種)	26	X 300
TOW LINE	ホリコロピル	42	X 135 (144 KM)
HAWSER	ホリコロピル	32	X 165 (461 KM)

PRINCIPAL DIMENSIONS

LENGTH (P.P.)	28.00 M
LENGTH (SQANT.)	27.02 M
BREADTH (MID)	8.00 M
DEPTH (MID)	3.21 M
DRAFT (MID)	2.70 M
DRAFT (SQANT.)	3.00 M
GRADE :	UNIV-SHO DAL 4-SM SEM
SERVICE AREA	COASTING SERVICE
TYPE :	STEEL TUB BOAT FLUSH DECKER WITH RAISED QUARTER DECK



中央切断面図

E 株式会社神陽商會 製
150G/T型押船兼曳船
春日丸

尺 度	1/30
工事番号	
図面番号	
年月日	H. 14. 2. 25
社長 部長 設計 製図	丸丸