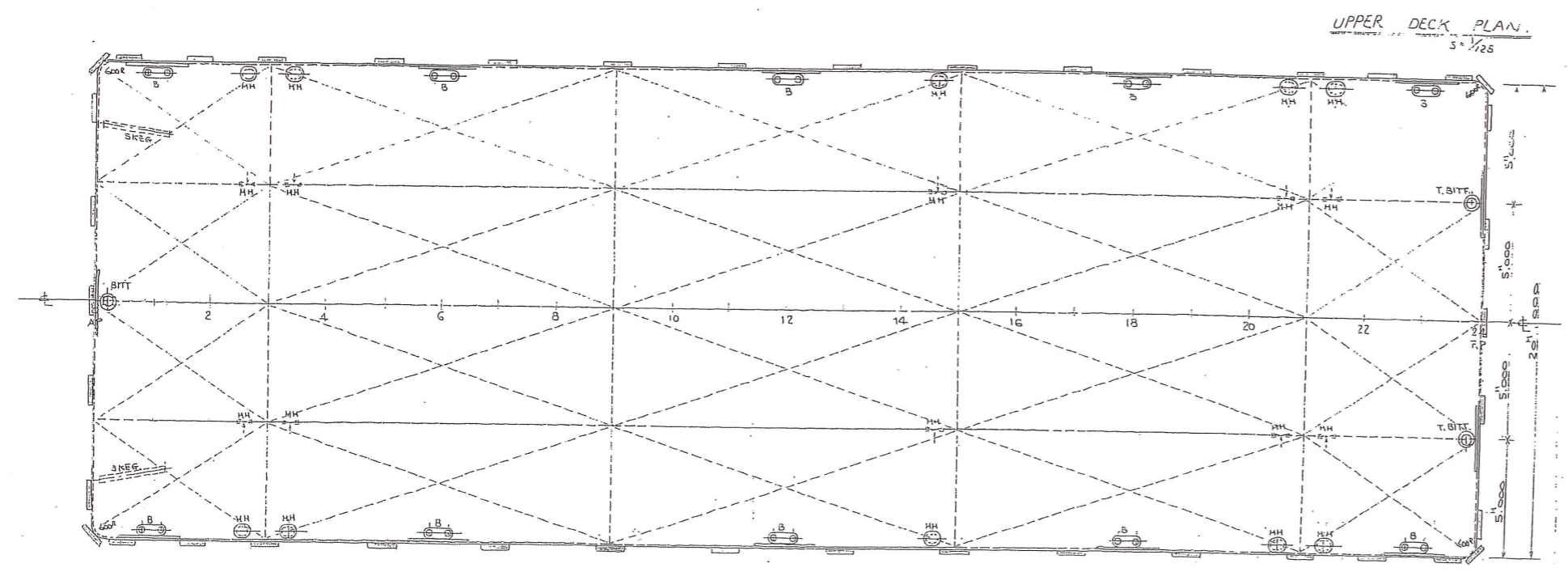
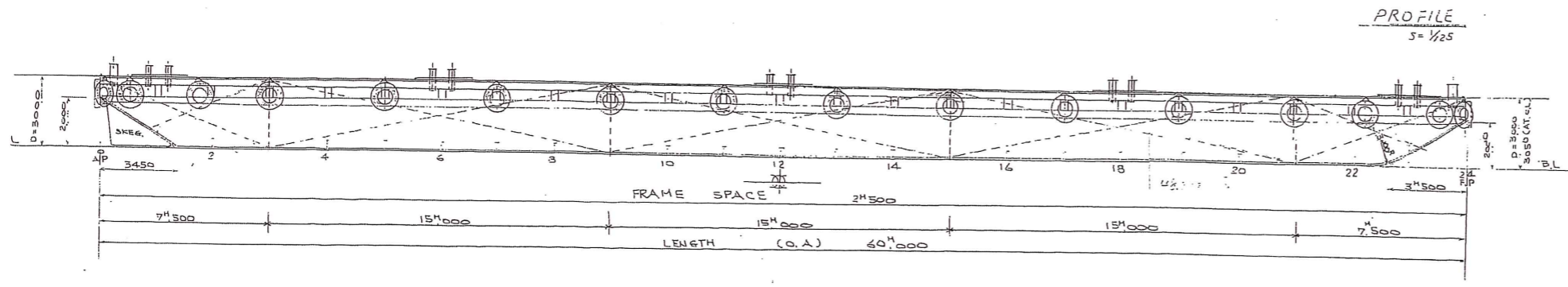


PRINCIPAL DIMENSION

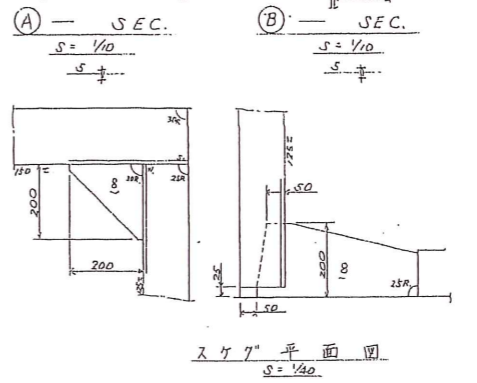
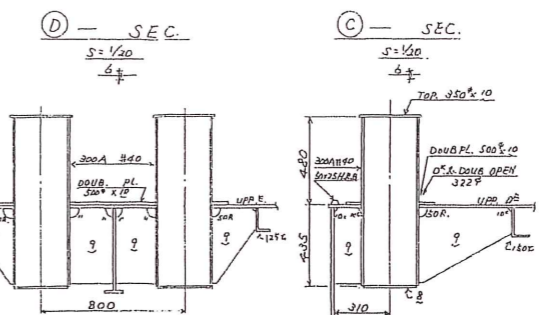
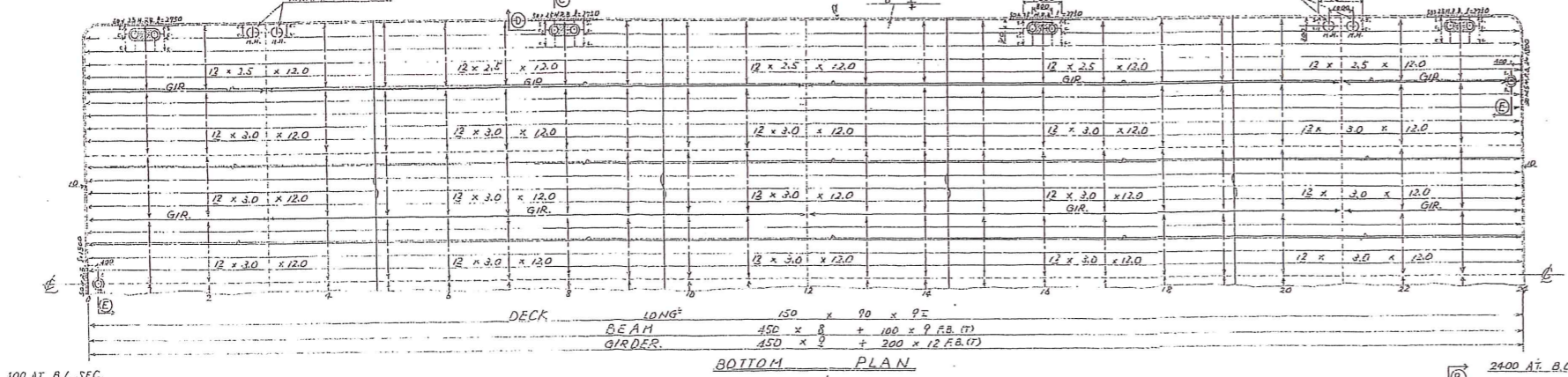
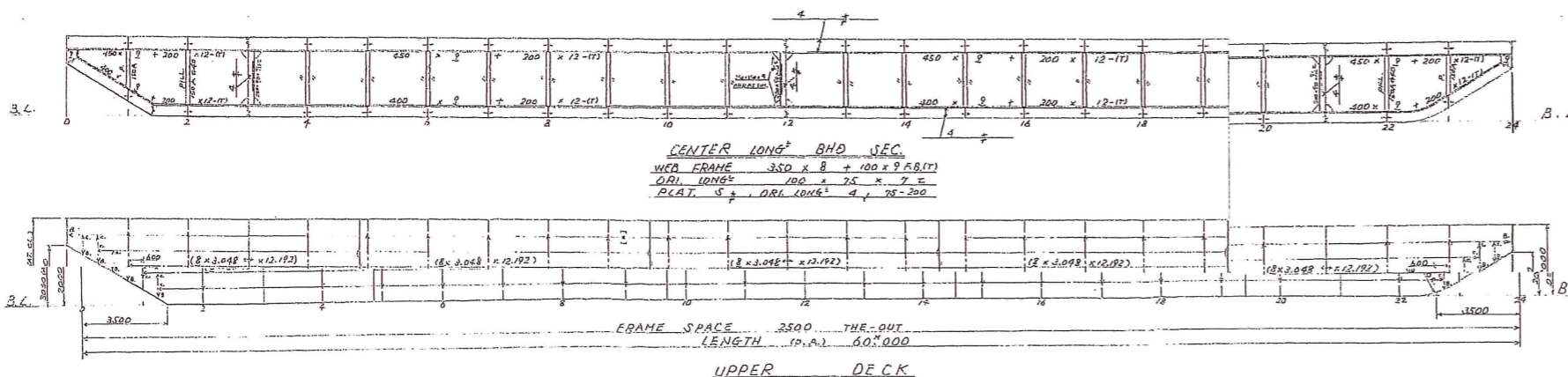
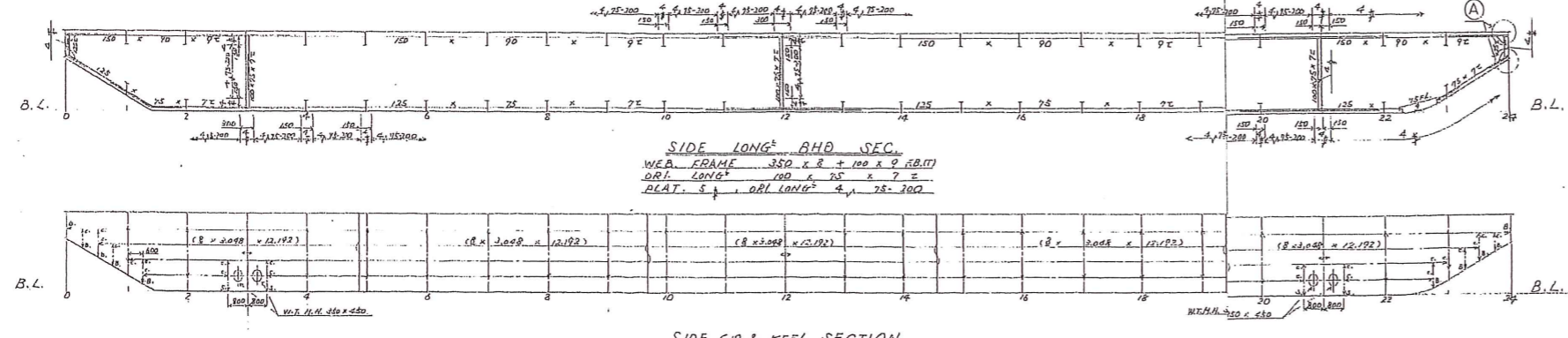
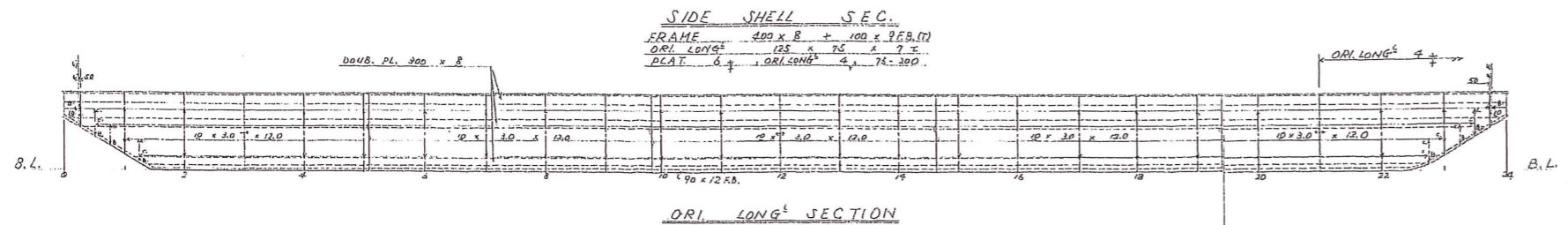
LENGTH (O.A)	50,000
BREADTH (M.L.D)	20,000
DEPTH (M.L.D)	3,000
CAMBER	0.050



NIKO-621
60 x 20 x 3

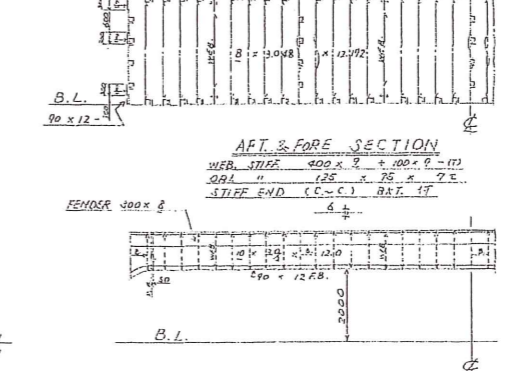
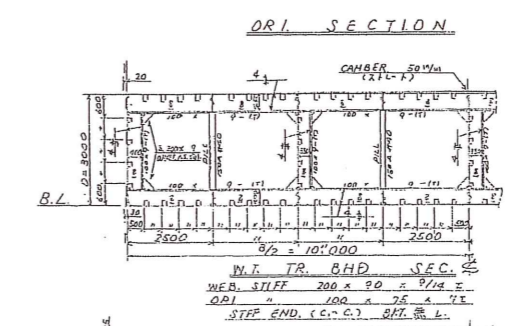
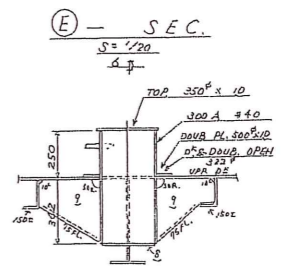
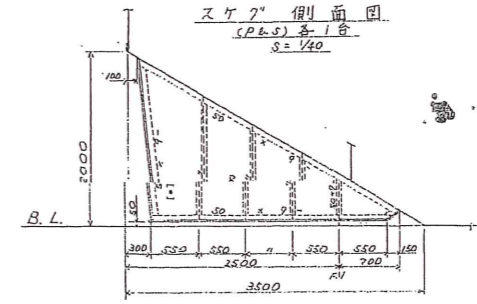
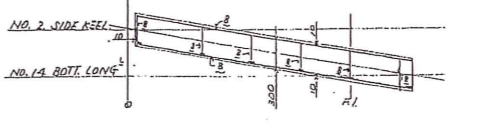
一般配置図
中央切断面図

尺度	1/25	1/50
本圖原形石取港町16-6		
宗田造船株式会社		
電話(明石)312-3840		
審査設計	軍國	
松田		
製図年月日	71.9年7月23日	
番船		



PRINCIPAL DIMENSION

LENGTH (O.A.)	60.000
BREADTH (M ²)	20.000
DEPTH (H)	3.000
CAMBER (H/L)	0.4050



NIKO-621

60.0 型ポンツอง台船

鋼材構造図

尺度 1/25 1/100

在船明瞭図 16-6

宗田造船株式会社

電話(明) 2-3840

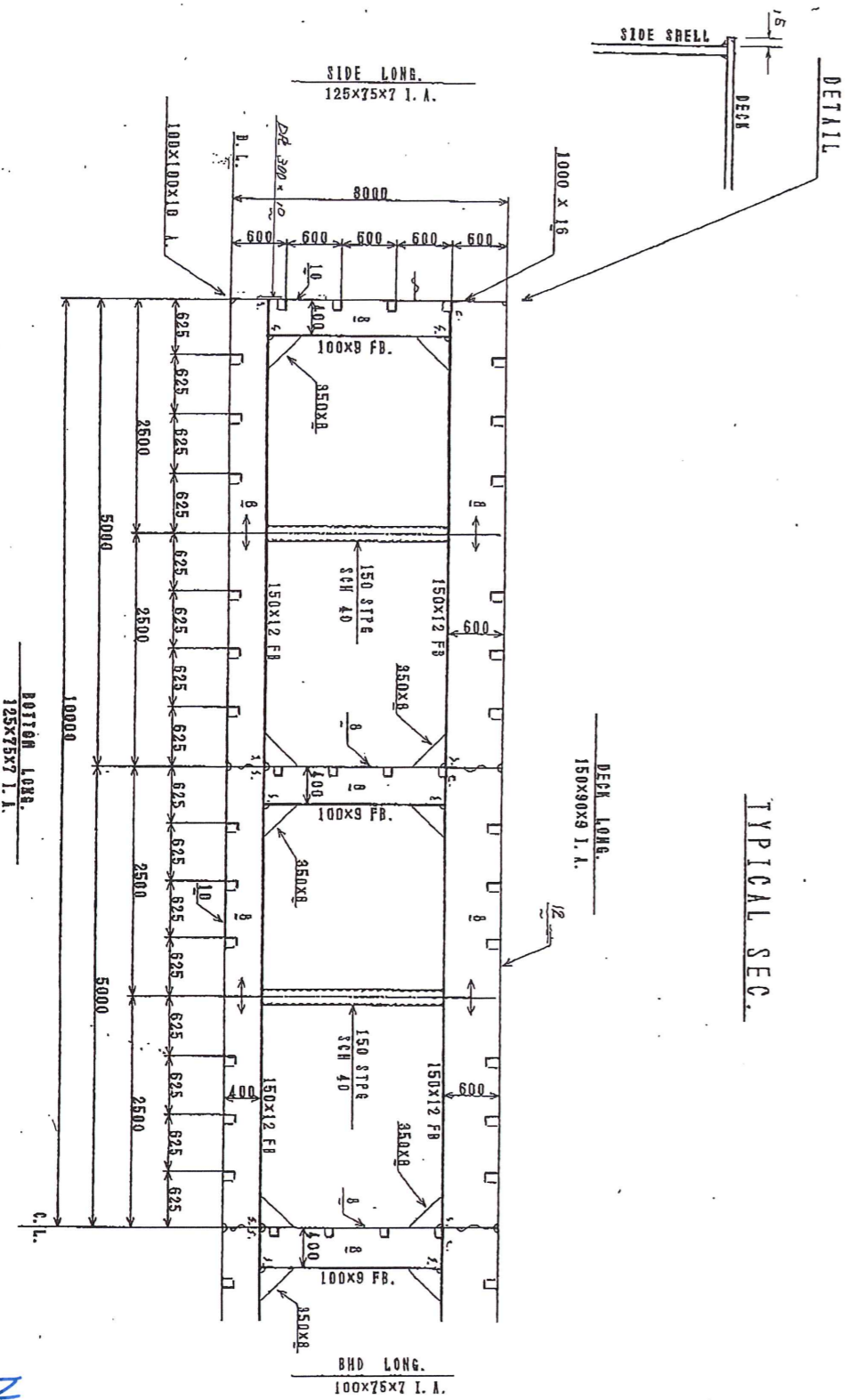
審査 宇園

技部

製図年月日 年 月 日

番船

図面番号



TYPICAL SEC.

NIKO-621

60.00m

断面图

(S = 1/50)